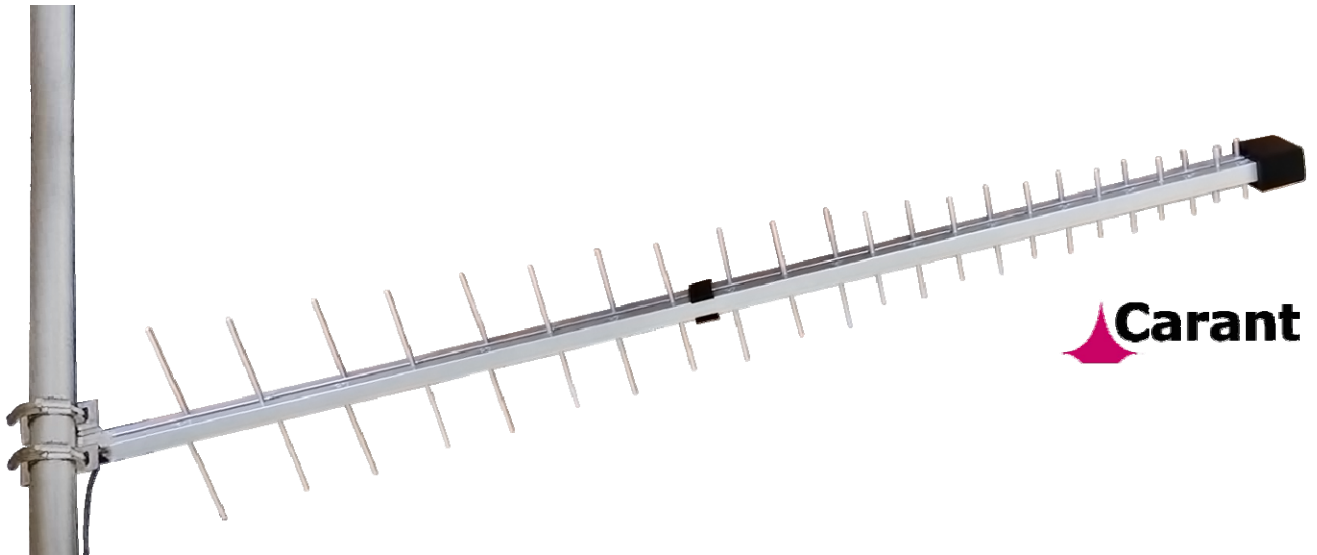




## เสาอากาศ CARANT LPA922

Broadband high-gain directional antenna, 824 - 2170 MHz



### ELECTRICAL DATA

Frequency Range	824 - 970 MHz & 1710 - 2170 MHz
Gain	min 7.5 dBd or 10.5 dBi
Impedance	50 ohm
VSWR	< 1.5
Front/back ratio	> 20dB
Polarization	Vertical
Connector type	SMA male
Directionality	H-30

### MECHANICAL DATA

Element material	Aluminium alloy
Support boom material	Aluminium alloy
Mounting bracket material	Stainless steel
Cable	RG223 (0.5 m)
Plastic components	ABS
Mast diameter	30 - 60 mm
Antenna dimensions	170 x 1000 x 40 mm

Installation  
aid:



33 - PhoneLine  
Air Interface

68 ถนนสีรินธร แขวงบางพลัด เขตบางพลัด กรุงเทพมหานคร 10700

68 SIRINDHORN ROAD, BANG PHLAT SUB-DISTRICT, BANG PHLAT DISTRICT, BANGKOK 10700 THAILAND

E-mail: [support@pos-telecom.co.th](mailto:support@pos-telecom.co.th) Website: [www.pos-telecom.co.th](http://www.pos-telecom.co.th)

TEL: (+662) 435-1883-5 FAX: (+662) 435-1886-7